



Original Article

Real-world Effectiveness and Tolerability of Interferon-free Direct-acting Antiviral for 15,849 Patients with Chronic Hepatitis C: A Multinational Cohort Study

Fanpu Ji^{1#}, Sally Tran^{2#}, Eiichi Ogawa³, Chung-Feng Huang^{4,5}, Takanori Suzuki⁶, Yu Jun Wong^{7,8}, Hidenori Toyoda⁹, Dae Won Jun^{10,11}, Liu Li¹², Haruki Uojima¹³, Akito Nozaki¹⁴, Makoto Chuma¹⁴, Cheng-Hao Tseng¹⁵, Yao-Chun Hsu¹⁵, Masatoshi Ishigami¹⁶, Takashi Honda¹⁶, Masanori Atsukawa¹⁷, Hiroaki Haga¹⁸, Masaru Enomoto¹⁹, Huy Trinh²⁰, Carmen Monica Preda²¹, Phillip Vutien²², Charles Landis²², Dong Hyun Lee²³, Tsunamasa Watanabe²⁴, Hirokazu Takahashi^{25,26}, Hiroshi Abe²⁷, Akira Asai²⁸, Yuichiro Eguchi^{25,29}, Jie Li³⁰, Xiaozhong Wang³¹, Jia Li³², Junping Liu³³, Jing Liang³⁴, Carla Pui-Mei Lam³⁵, Rui Huang³⁰, Qing Ye³⁴, Hongying Pan³⁶, Jiajie Zhang³⁶, Dachuan Cai³⁷, Qi Wang³⁸, Daniel Q. Huang^{39,40}, Grace Wong^{41,42}, Vincent Wai-Sun Wong⁴¹, Junyi Li¹², Son Do⁴³, Norihiro Furusyo⁴⁴, Makoto Nakamura⁴⁵, Hideyuki Nomura⁴⁶, Eiji Kajiwara⁴⁷, Eileen L. Yoon^{10,11}, Sang Bong Ahn⁴⁸, Koichi Azuma⁴⁹, Kazufumi Dohmen⁵⁰, Jihyun An⁵¹, Do Seon Song⁵², Hyun Chin Cho⁵³, Akira Kawano⁵⁴, Toshimasa Koyanagi⁵⁵, Aritsune Ooho⁵⁶, Takeaki Satoh⁵⁷, Kazuhiro Takahashi⁵⁸, Ming-Lun Yeh^{4,5}, Pei-Chien Tsai^{4,5}, Satoshi Yasuda⁹, Yunyu Zhao¹, Yishan Liu¹, Tomomi Okubo⁵⁹, Norio Itokawa¹⁷, Mi Jung Jun²³, Toru Ishikawa⁶⁰, Koichi Takaguchi⁶¹, Tomonori Senoh⁶¹, Mingyuan Zhang⁶², Changqing Zhao⁶³, Raluca Ioana Alecu²¹, Wei Xuan Tay⁷, Pooja Devan⁷, Joanne Kimiko Liu²², Ritsuzo Kozuka⁶⁴, Elena Vargas-Accarino⁶⁵, Ai-Thien Do⁴³, Mayumi Maeda², Wan-Long Chuang⁴, Jee-Fu Huang^{4,5}, Chia-Yen Dai^{4,5}, Ramsey Cheung^{2,66}, Maria Buti^{65,67}, Junqi Niu⁶², Wen Xie³⁸, Hong Ren³⁷, Seng Gee Lim^{39,40}, Chao Wu³⁰, Man-Fung Yuen^{35,68}, Jia Shang³³, Qiang Zhu⁶⁹, Yoshiyuki Ueno¹⁸, Yasuhito Tanaka^{6,70}, Jun Hayashi⁷¹, Ming-Lung Yu^{4,5,72} and Mindie H. Nguyen^{2,73*}

¹Department of Infectious Diseases, The Second Affiliated Hospital of Xi'an Jiaotong University, Xi'an, Shaanxi, China; ²Division of Gastroenterology and Hepatology, Department of Medicine, Stanford University Medical Center, Palo Alto, CA, USA; ³Department of General Internal Medicine, Kyushu University Hospital, Fukuoka, Japan; ⁴Hepatobiliary Division, Department of Internal Medicine, Kaohsiung Medical University Hospital, Kaohsiung; ⁵Hepatitis Research Center, College of Medicine and Center for Liquid Biopsy and Cohort Research, Kaohsiung Medical University, Kaohsiung; ⁶Department of Gastroenterology and Metabolism, Nagoya City University Graduate School of Medical Sciences, Nagoya, Japan; ⁷Gastroenterology & Hepatology, Changi General Hospital, Singhealth, Singapore; ⁸Singhealth Duke-NUS Medicine Academic Clinical Program, Singapore; ⁹Department of Gastroenterology, Ogaki Municipal Hospital, Ogaki, Japan; ¹⁰Department of Internal Medicine, Hanyang University, College of Medicine, Seoul, Korea; ¹¹Hanyang Institute of Bioscience and Biotechnology, Hanyang University, Seoul, Korea; ¹²Department of Hepatology, The Third People's Hospital of Kunming City, Kunming, Yunnan, China; ¹³Department of Gastroenterology, Internal Medicine, Kitasato University School of Medicine, Sagami-hara, Japan; ¹⁴Gastroenterological Center, Yokohama City University Medical Center, Yokohama, Japan; ¹⁵Division of Gastroenterology and Hepatology, Department of Internal Medicine, E-Da Cancer Hospital, Kaohsiung; ¹⁶Department of Gastroenterology and Hepatology, Nagoya University Graduate School of Medicine, Nagoya, Japan; ¹⁷Division of Gastroenterology and Hepatology, Nippon Medical School, Tokyo, Japan; ¹⁸Department of Gastroenterology, Yamagata University Faculty of Medicine, Yamagata, Japan; ¹⁹Department of Transfusion Medicine and Department of Hepatology, Osaka Metropolitan University Graduate School of Medicine, Osaka, Japan; ²⁰San Jose Gastroenterology, San Jose, CA, USA; ²¹Gastroenterology & Hepatology Department, Clinic Fundeni Institute, Bucharest, Romania; ²²Division of Gastroenterology and Hepatology, University of Washington, Seattle, WA, USA; ²³Department of Gastroenterology, Good Gang-An Hospital, Busan, Korea; ²⁴Division of Gastroenterology and Hepatology, St. Marianna University School of Medicine, Kawasaki, Japan; ²⁵Liver Center, Saga University Hospital, Saga, Japan; ²⁶Division of Metabolism and Endocrinology, Saga University Faculty of Medicine, Saga, Japan; ²⁷Division of Gastroenterology and Hepatology, Shinmatsudo Central General Hospital, Chiba, Japan; ²⁸2nd Department of Internal Medicine, Osaka Medical and Pharmaceutical University, Osaka, Japan; ²⁹Locomedical General Institute, Locomedical Eguchi Hospital, Saga, Japan; ³⁰Department of Infectious Diseases, Nanjing Drum Tower Hospital, Affiliated Hospital of Medical School, Nanjing University, Nanjing, Jiangsu, China; ³¹Affiliated Traditional Chinese Medicine Hospital of Xinjiang Medical University, Urumqi, Xinjiang, China; ³²Department of Gastroenterology and Hepatology, The Second People's Hospital of

Tianjin, Tianjin, China; ³³Department of Infectious Diseases, Henan Provincial People's Hospital Affiliated to Zhengzhou University, Zhengzhou, Henan, China; ³⁴Department of Gastroenterology and Hepatology, The Third Central Hospital of Tianjin, Tianjin, China; ³⁵Department of Medicine, The University of Hong Kong, Hong Kong, China; ³⁶Department of Hepatology, Zhejiang Provincial People's Hospital Affiliated to Zhejiang University, Hangzhou, Zhejiang, China; ³⁷Department of Infectious Diseases, The Second Affiliated Hospital of Chongqing Medical University, Chongqing, China; ³⁸Center of liver diseases, Beijing Ditan Hospital Affiliated to Capital Medical University, Beijing, China; ³⁹Division of Gastroenterology and Hepatology, National University Hospital, Singapore; ⁴⁰Department of Medicine, Yong Loo Lin School of Medicine, National University of Singapore, Singapore; ⁴¹Department of Medicine and Therapeutics, The Chinese University of Hong Kong, Hong Kong, China; ⁴²State Key Laboratory of Digestive Disease, The Chinese University of Hong Kong, Hong Kong, China; ⁴³Digestive Health Associates of Texas, Dallas, TX, USA; ⁴⁴Taihaku Avenue Clinic, Fukuoka, Japan; ⁴⁵Department of Gastroenterology, National Hospital Organization Kyushu Medical Center, Fukuoka, Japan; ⁴⁶Department of Internal Medicine, Haradai Hospital, Fukuoka, Japan; ⁴⁷Hepatology Clinic, Kajiwar Clinic, Kitakyushu, Japan; ⁴⁸Department of Internal Medicine, Nowon Eulji Medical Center, Eulji University College of Medicine, Seoul, Korea; ⁴⁹Department of Medicine, Kyushu Central Hospital, Fukuoka, Japan; ⁵⁰Department of Internal Medicine, Chihaya Hospital, Fukuoka, Japan; ⁵¹Department of Internal Medicine, Hanyang University, College of Medicine, Guri Hospital, Guri, Korea; ⁵²Division of Hepatology, Department of Internal Medicine, St. Vincent's Hospital, College of Medicine, The Catholic University of Korea, Suwon, Korea; ⁵³Departments of Internal Medicine, Gyeongsang National University Hospital, Jinju, Korea; ⁵⁴Department of Medicine, Kitakyushu Municipal Medical Center, Fukuoka, Japan; ⁵⁵Department of Medicine, Fukuoka City Hospital, Fukuoka, Japan; ⁵⁶Department of Hepatology, Steel Memorial Yawata Hospital, Kitakyushu, Japan; ⁵⁷Center for Liver Disease, National Hospital Organization Kokura Medical Center, Kitakyushu, Japan; ⁵⁸Department of Medicine, Hamanomachi Hospital, Fukuoka, Japan; ⁵⁹Division of Gastroenterology, Nippon Medical School Chiba Hokusoh Hospital, Chiba, Japan; ⁶⁰Department of Gastroenterology, Saiseikai Niigata Hospital, Niigata, Japan; ⁶¹Department of Hepatology, Kagawa Prefectural Central Hospital, Kagawa, Japan; ⁶²Department of Hepatology, The First Hospital of Jilin University, Changchun, Jilin, China; ⁶³Shuguang Hospital, Shanghai University of Traditional Chinese Medicine, Shanghai, China; ⁶⁴Department of Hepatology, Osaka Metropolitan University Graduate School of Medicine, Osaka, Japan; ⁶⁵Liver Diseases Group, Vall d'Hebron Research Institute, Barcelona, Spain; ⁶⁶Division of Gastroenterology and Hepatology, Veterans Affairs Palo Alto Health Care System, Palo Alto, CA, USA; ⁶⁷Liver Unit, Department of Internal Medicine, Hospital Universitari Vall d'Hebron and Universitat Autònoma de Barcelona, Barcelona, Spain; ⁶⁸State Key Laboratory of Liver Research, The University of Hong Kong, Hong Kong, China; ⁶⁹Department of Gastroenterology, Shandong Provincial Hospital Affiliated to Shandong University, Ji'nan, Shandong, China; ⁷⁰Department of Gastroenterology and Hepatology, Faculty of Life Sciences, Kumamoto University, Kumamoto, Japan; ⁷¹Kyushu General Internal Medicine Center, Haradai Hospital, Fukuoka, Japan; ⁷²School of Medicine and Doctoral Program of Clinical and Experimental Medicine, College of Medicine and Center of Excellence for Metabolic Associated Fatty Liver Disease, National Sun Yat-sen University, Kaohsiung; ⁷³Department of Epidemiology and Population Health, Stanford University, Stanford, CA, USA

Received: March 07, 2024 | Revised: May 08, 2024 | Accepted: May 22, 2024 | Published online: June 17, 2024

Abstract

Background and Aims: As practice patterns and hepatitis C virus (HCV) genotypes (GT) vary geographically, a global real-world study from both East and West covering all GTs can help inform practice policy toward the 2030 HCV elimination goal. This study aimed to assess the effectiveness and tolerability of DAA treatment in routine clinical practice in a multinational cohort for patients infected with all HCV GTs, focusing on GT3 and GT6. **Methods:** We analyzed the sustained virological response (SVR12) of 15,849 chronic hepatitis C patients from 39 Real-World Evidence from the Asia Liver Consortium for HCV clinical sites in Asia Pacific, North America, and Europe between 07/01/2014–07/01/2021. **Results:** The mean age was 62±13 years, with 49.6% male. The demographic breakdown was 91.1%

Asian (52.9% Japanese, 25.7% Chinese/Taiwanese, 5.4% Korean, 3.3% Malaysian, and 2.9% Vietnamese), 6.4% White, 1.3% Hispanic/Latino, and 1% Black/African-American. Additionally, 34.8% had cirrhosis, 8.6% had hepatocellular carcinoma (HCC), and 24.9% were treatment-experienced (20.7% with interferon, 4.3% with direct-acting antivirals). The largest group was GT1 (10,246 [64.6%]), followed by GT2 (3,686 [23.2%]), GT3 (1,151 [7.2%]), GT6 (457 [2.8%]), GT4 (47 [0.3%]), GT5 (1 [0.006%]), and untyped GTs (261 [1.6%]). The overall SVR12 was 96.9%, with rates over 95% for GT1/2/3/6 but 91.5% for GT4. SVR12 for GT3 was 95.1% overall, 98.2% for GT3a, and 94.0% for GT3b. SVR12 was 98.3% overall for GT6, lower for patients with cirrhosis and treatment-experienced (TE) (93.8%) but ≥97.5% for treatment-naïve patients regardless of cirrhosis status. On multivariable analysis, advanced age, prior treatment failure, cirrhosis, active HCC, and GT3/4 were independent predictors of lower SVR12, while being Asian was a significant predictor of achieving SVR12. **Conclusions:** In this diverse multinational real-world cohort of patients with various GTs, the overall cure rate was 96.9%, despite large numbers of patients with cirrhosis, HCC, TE, and GT3/6. SVR12 for GT3/6 with cirrhosis and TE was lower but still excellent (>91%).

Keywords: Hepatitis C virus; Liver cirrhosis; Hepatocellular carcinoma; Genotype; DAA; REAL-C.

[‡]Contributed equally to this work.

***Correspondence to:** Mindie H. Nguyen, MD, MAS, Professor of Medicine (Gastroenterology and Hepatology) and, by courtesy, of Epidemiology and Population Health, Stanford University Medical Center, 780 Welch Road, C3250K, Palo Alto, CA 94304, USA. ORCID: <https://orcid.org/0000-0002-6275-4989>. Tel: +1-650-498-6084, E-mail: mindiehn@stanford.edu.

Citation of this article: Ji F, Tran S, Ogawa E, Suzuki C-FHT, Wong YJ, Toyoda H, *et al*. Real-world Effectiveness and Tolerability of Interferon-free Direct-acting Antiviral for 15,849 Patients with Chronic Hepatitis C: A Multinational Cohort Study. *J Clin Transl Hepatol* 2024;12(7):646–658. doi: 10.14218/JCTH.2024.00089.

Introduction

Hepatitis C virus (HCV) infection is a significant global health problem. Chronic hepatitis C (CHC) can result in the progression of liver disease, including liver cirrhosis, hepatocellular carcinoma (HCC), and liver-related mortality.¹ As of 2020, an estimated 56.8 million individuals worldwide are affected by chronic HCV infection, indicating a decrease from the 71 million estimated in 2015.² However, despite this decline, the goal of globally eliminating HCV by 2030 remains distant. The advent of direct-acting antiviral (DAA) medications has revolutionized the treatment of HCV infection by allowing shorter treatment durations and enhancing the efficiency of sustained virological response (SVR). Achieving SVR improves patient outcomes by reducing the risk of liver disease progression and its associated complications.^{3–6}

Globally, HCV genotypes (GTs) 1, 2, 3, 4, and 6 are the most prevalent. HCV GTs can play a crucial role in predicting the risk of disease progression and the response to treatment. For example, GT3 has been associated with an increased risk of treatment failure and the emergence of resistance-associated substitutions.^{7,8} HCV GT distribution also varies geographically, with GT1 accounting for the highest proportion of HCV cases globally (46.2%) and being the predominant GT in most Western countries. GT3 is the second most common genotype (30.1%) and is more prevalent in South Asia and Western China. Other GTs, including GT2 (9.1%), GT4 (8.3%), and GT6 (5.4%), are more common in East and Southeast Asia, North Africa, and the Middle East.^{9–11} Geographical variations in HCV GT distribution, access to healthcare, and the availability of effective treatment options all contribute to the complexity of treatment outcomes. Consequently, conducting a global real-world HCV study encompassing data from both East and West is important and can guide medical practice and public health policy to achieve the 2030 HCV elimination goal.

In this study, using a large cohort of patients with CHC derived from the Real-World Evidence from the Asia Liver Consortium for HCV (REAL-C) database, we aimed to assess the effectiveness and tolerability of DAA treatment in routine clinical practice for patients infected with all HCV GTs. Since GT3 is still more difficult to treat, especially for patients with GT3b and cirrhosis, and there are still conflicting data on low SVR rates for GT6,^{7,8,12–14} this study focused on SVR outcomes and factors associated with lower treatment response for patients with GT3 and GT6 infections.

Methods

Study design and study patients

This multinational, non-interventional study extracted patient data from the REAL-C database using a standardized case report form and unified variable definitions at each study center. REAL-C is an international consortium comprising 39 study centers from North America, Europe, and the Asia-Pacific region. Details of this registry have been described previously and include CHC patients monitored and treated in routine practice.¹⁵ The study was conducted by

the Declaration of Helsinki and approved by the Institutional Review Board at Stanford University, Stanford, CA, USA, and at each participating study center.

Patients were included if they were adults (18 years or older), received any interferon (IFN)-free DAA regimen for the treatment of CHC of any GT between July 1, 2014, and July 1, 2021, regardless of a history of cirrhosis or HCC, prior treatment, and had adequate medical records for the primary endpoint assessment. Patients with a prognosis of < 12 months were excluded.

Study assessment

Patient demographic information, clinical characteristics, and laboratory data were collected at baseline. The demographic information included age, gender, and race/ethnicity. The clinical characteristics included the presence of cirrhosis, active/inactive HCC, co-infection with HBV/HIV, comorbidities, treatment history, and the specific DAA treatment regimens administered. Patients with inactive HCC were defined as those who had undergone local ablation (such as alcohol injection, radiofrequency ablation, or microwave ablation), surgical resection, or liver transplantation and had no evidence of HCC recurrence on imaging within the three months preceding the initiation of DAA treatment. The choice of antiviral therapy was solely determined by the treating physician, taking into consideration factors such as HCV GTs, local preferences, insurance coverage, prior treatment history, and the presence of cirrhosis.

The baseline laboratory data included HCV GT, platelet count, total bilirubin, alanine aminotransferase, aspartate aminotransferase, albumin, creatinine, estimated glomerular filtration rate, fibrosis-4 index, and aspartate aminotransferase to platelet ratio index. The HCV RNA viral load was determined both at the time of DAA initiation and 12 weeks after the end of treatment using a real-time reverse transcriptase polymerase chain reaction assay.

The primary endpoint was the achievement of SVR12, defined as an undetectable HCV RNA level (with a detection threshold of 25 IU/mL or lower) at 12 weeks after the completion of treatment. The secondary endpoint was the assessment of tolerability, including treatment-related adverse events (AEs), treatment discontinuation, and death.

Statistical analysis

Categorical variables were expressed as numbers (percentages) and evaluated by χ^2 or Fisher's exact test as appropriate. Continuous variables were expressed as mean±standard deviation and evaluated by Student's *t*-test for normally distributed data or Mann-Whitney *U*-tests if not. Logistic regression analysis was used to identify any independent baseline factors influencing treatment response. We estimated the odds ratio (OR) associated with achieving SVR12 in each subgroup and its 95% confidence intervals (95% CI). Factors included in the logistic regression models were chosen based on prior knowledge, and those with an univariable OR value of $p < 0.1$ were considered for inclusion in the multivariable model. A two-tailed $p < 0.05$ was considered statistically significant. All statistical analyses were performed using STATA version 17.0 (StataCorp LLC, USA).

Results

Patient characteristics and treatment regimens

Our study analyzed a total of 15,849 patients treated with IFN-free DAA in routine practice from 39 centers across North America, Europe, and the Asia-Pacific region. As shown in Table 1,

Table 1. Baseline characteristics of patients who initiated antiviral therapy

Characteristics	All Geno- types (n=15,849)	Genotype 1 (n=10,246)	Genotype 2 (n=3,686)	Genotype 3 (n=1,151)	Genotype 4 (n=47)	Geno- type 5 (n=1)	Genotype 6 (n=457)	Untyped GTs (n=261)
Age, year	62±13	64±13	61±13	50±10	58±11	48	60±13	54±13
Male, n (%)	7,866 (49.6)	4,803 (46.9)	1,696 (46.0)	921 (80.0)	28 (59.6)	1 (100)	244 (53.4)	173 (66.3)
Ethnicity, n (%) (n=15,663)								
Asian	14,263 (91.1)	9,110 (89.5)	3,602 (97.9)	951 (83.3)	16 (35.6)	-	454 (99.3)	130 (80.3)
White	995 (6.4)	763 (7.5)	54 (1.5)	150 (13.1)	9 (20.0)	-	0	19 (11.7)
Black/African-American	149 (1.0)	125 (1.2)	5 (0.1)	3 (0.3)	13 (28.9)	-	0	3 (1.9)
Hispanic/Latino	197 (1.3)	135 (1.3)	16 (0.4)	31 (2.7)	6 (13.3)	-	0	9 (5.6)
American Indian/Alaska Native	9 (0.1)	8 (0.1)	0	1 (0.1)	0	-	0	0
Others	50 (0.3)	37 (0.4)	2 (0.1)	6 (0.5)	1 (2.2)	-	3 (0.7)	1 (0.6)
Treatment experienced, n (%) (n=15,725)	3,922 (24.9)	2,995 (29.5)	691 (18.9)	99 (8.6)	13 (28.3)	0	76 (16.7)	48 (19.2)
Interferon regimens	3,249 (20.7)	2,455 (24.2)	614 (16.8)	65 (5.7)	11 (23.9)	0	67 (14.8)	37 (14.8)
DAA regimens	699 (4.3)	537 (5.3)	77 (2.1)	34 (3.0)	2 (4.4)	0	8 (1.8)	11 (4.4)
HBV co-infection, n (%) (n=11,835)	353 (3.0)	218 (2.9)	73 (2.7)	29 (2.7)	1 (3.2)	-	22 (5.7)	10 (7.4)
HIV co-infection, n (%) (n=7,363)	124 (1.7)	32 (0.8)	11 (0.7)	49 (4.7)	1 (3.9)	-	6 (1.7)	25 (12.6)
HCC, n (%) (n=15,811)	1,352 (8.6)	992 (9.7)	242 (6.6)	72 (6.3)	2 (4.3)	-	18 (3.9)	26 (10.0)
HCC status, n (%) (n=1,312)								
Inactive	1,031 (78.6)	778 (80.2)	176 (76.2)	42 (60.0)	2 (100)	-	13 (72.2)	20 (95.2)
Active	281 (21.4)	192 (19.8)	55 (23.8)	28 (40.0)	0	-	5 (27.8)	1 (4.8)
Cirrhosis, n (%)	5,502 (34.8)	3,748 (34.6)	1,007 (27.3)	468 (40.8)	21 (44.7)	-	156 (34.2)	102 (39.2)
Cirrhosis stages, n (%) (n=3297)								
CTP A	2,947 (89.4)	2,091 (89.7)	583 (92.7)	202 (80.2)	10 (90.9)	-	38 (90.5)	23 (69.7)
CTP B	299 (9.1)	207 (8.9)	41 (6.5)	40 (15.9)	1 (9.1)	-	3 (7.1)	7 (21.2)
CTP C	51 (1.6)	32 (1.4)	5 (0.8)	10 (4.0)	0	-	1 (2.4)	3 (9.1)
AST, IU/L	45 (30-70)	45 (31-69)	41 (27-72)	52 (35-80)	34 (24-72)	30	44 (29-72)	45 (29-74)
ALT, IU/L	43 (27-77)	43 (27-72)	40 (23-79)	58 (34-96)	40 (25-90)	35	53 (29-90)	66 (40-99)
Platelet count, ×10 ³ U/L	164±70	159±68	172±69	175±78	181±74	-	179±70	181±80
Albumin, g/dL	4.1±0.5	4.0±0.5	4.1±0.5	4.1±0.7	4.0±0.5	-	4.1±0.5	4.1±0.7
Total bilirubin, mg/dL	0.7 (0.6-1)	0.7 (0.6-1)	0.7 (0.5-1)	0.8 (0.5-1.1)	0.6 (0.4-0.8)	-	0.7 (0.5-1)	0.7 (0.5-1)
FIB-4	2.8 (1.7-4.9)	3.1 (1.9-5.2)	2.5 (1.5-4.4)	2.0 (1.2-4.0)	2.4 (1.2-3.3)	-	2.0 (1.4-3.9)	2.0 (1.1-3.7)
APRI	0.7 (0.4-1.5)	0.8 (0.4-1.5)	0.6 (0.3-1.4)	0.8 (0.5-1.6)	0.6 (0.3-1.3)	-	0.6 (0.4-1.3)	0.6 (0.4-1.5)
Creatinine, mg/dL	0.8 (0.6-0.9)	0.8 (0.6-0.9)	0.7 (0.6-0.9)	0.9 (0.7-1.0)	0.8 (0.6-1.0)	-	0.8 (0.7-1.0)	0.8 (0.6-1.0)
eGFR, mL/m/1.73 m ²	88±22	86±22	89±23	93±20	95±23	-	85±23	92±26
HCV RNA, log ₁₀ IU/mL	6.0±0.8	6.0±0.8	5.9±1.0	6.0±0.9	5.8±0.8	6.9	6.3±0.9	6.1±0.9
>800,000 IU/mL	9,758 (63.2)	6,438 (64.2)	2,076 (57.5)	745 (68.7)	24 (53.3)	1 (100)	309 (72.0)	165 (66.5)
Comorbidity, n (%)								
Diabetes (n=14,674)	2,772 (18.9)	1,898 (20.1)	660 (19.1)	89 (8.4)	10 (23.3)	-	73 (17.0)	42 (17.0)

(continued)

Table 1. (continued)

Characteristics	All Genotype types (n=15,849)	Genotype 1 (n=10,246)	Genotype 2 (n=3,686)	Genotype 3 (n=1,151)	Genotype 4 (n=47)	Genotype 5 (n=1)	Genotype 6 (n=457)	Untyped GTs (n=261)
Hypertension (n=11,674)	4,387 (37.6)	2,991 (39.2)	1,043 (37.1)	125 (23.0)	20 (51.3)	0	146 (34.3)	62 (27.9)
Dyslipidemia (n=11,630)	1,026 (8.8)	656 (8.7)	254 (8.9)	45 (8.5)	5 (13.2)	0	49 (11.5)	17 (7.8)
Cardiovascular disease (n=9,491)	636 (6.7)	443 (7.3)	146 (6.6)	27 (5.1)	1 (2.8)	0	11 (2.6)	8 (3.7)
DAA treatment regimens								
DCV/ASV	2,357 (14.9)	2,351 (23.0)	5 (0.1)	1 (0.1)	0	0	0	0
PrOD±RBV	1,603 (10.1)	1,527 (14.9)	75 (2.0)	0	0	0	0	1 (0.4)
EBR/GZR	847 (5.3)	825 (8.1)	3 (0.1)	0	6 (12.8)	0	2 (0.4)	11 (4.2)
SOF/LDV±RBV	4,856 (30.6)	4,375 (42.7)	132 (3.6)	24 (2.1)	25 (53.2)	1 (100)	219 (47.9)	80 (30.7)
SOF/RBV	2,785 (17.6)	74 (0.7)	2,593 (70.4)	82 (7.1)	2 (4.3)	0	22 (4.8)	12 (4.6)
SOF/DCV±RBV	382 (2.4)	96 (0.9)	149 (4.0)	102 (8.9)	0	0	16 (3.5)	19 (7.3)
GLE/PIB	1,219 (7.7)	530 (5.2)	494 (13.4)	68 (5.9)	5 (10.6)	0	70 (15.3)	52 (19.9)
SOF/VEL±RBV	1,640 (10.4)	381 (3.7)	205 (5.6)	851 (73.9)	8 (17.0)	0	122 (26.7)	73 (28.0)
Others	160 (1.0)	87 (0.9)	30 (0.8)	23 (2.0)	1 (2.1)	0	6 (1.3)	13 (5.0)

HCC, Hepatocellular carcinoma; HCV, Hepatitis C virus; HBV, Hepatitis B virus; HIV, Human immunodeficiency virus; DAA, Direct-acting antiviral; ALT, Alanine aminotransferase; AST, Aspartate aminotransferase; FIB-4, Fibrosis-4 index; APRI, AST to platelet ratio index; CTP, Child-Turcotte-Pugh; eGFR, Estimated glomerular filtration rate; SOF, Sofosbuvir; VEL, Velpatasvir; RBV, Ribavirin; DCV, Daclatasvir; ASV, Asunaprevir; LDV, Ledipasvir; PrOD, Paritaprevir/ritonavir; ombitasvir + dasabuvir; EBR, Elbasvir; GZR, Grazoprevir; GLE, Glecaprevir; PIB, Pibrentasvir.

the mean age of the cohort was 62±13 years, 49.6% were male, and most were Asian (91.1%: 52.9% Japanese, 25.7% Chinese and Taiwanese, 5.4% Korean, 3.3% Malaysian, and 2.9% Vietnamese), followed by White (6.4%), Hispanic/Latino (1.3%), Black/African-American (1.0%), American Indian/Alaska Native (0.1%), and others (0.3%). In this study, 24.9% were treatment-experienced (TE: 20.7% with IFN regimens and 4.3% with DAA), 34.8% had cirrhosis (10.7% of these with decompensated cirrhosis, classified as CTP class B in 9.1% and CTP class C in 1.6%), 8.6% had preexisting HCC (78.6% inactive, 21.4% active), and 3.0% and 1.7% were co-infected with HBV or HIV, respectively. In addition, common comorbidities included hypertension (37.6%), diabetes (18.9%), dyslipidemia (8.8%), and cardiovascular disease (6.7%) (Table 1).

Patients were primarily infected with HCV GT1 (10,246 [64.6%]), followed by GT2 (3,686 [23.2%]), GT3 (1,151 [7.2%]), GT6 (457 [2.8%]), GT4 (47 [0.3%]), untyped GTs (261 [1.6%]), and there was only 1 case of GT5 (1 [0.006%]). Prescribed DAA regimens were also diverse, with the most commonly used being sofosbuvir/ledipasvir (SOF/LDV)±ribavirin (RBV) (30.6%), followed by SOF + RBV (17.6%), daclatasvir + asunaprevir (DCV/ASV) (14.9%), SOF/velpatasvir (VEL)±RBV (10.4%), paritaprevir/ritonavir, ombitasvir + dasabuvir (PrOD)±RBV (10.1%), glecaprevir/pibrentasvir (GLE/PIB) (7.7%), elbasvir/grazoprevir (EBR/GZR) (5.3%), SOF + DCV±RBV (2.4%), and others (1.0%).

SVR12 outcomes

Overall, SVR12 was achieved in 96.9% (95% CI: 96.6–97.1%, all DAA-based regimens and all GTs combined). Figure 1 displayed the SVR12 outcomes by demographic characteristics and DAA regimens. The SVR12 rates were generally comparable for both males (96.6%) and females (97.0%). By age group, patients older than 60 years had a slightly lower SVR12 rate (96.4%) compared to those younger than 60 years (97.4%) ($p=0.001$). By GTs, SVR12 was >95% for GT1/2/3/6, while it was 91.5% for GT4 ($p < 0.001$). Moreover, cirrhosis (94.8% vs. 97.9% without cirrhosis; $p < 0.001$), history of HCC (94.0% vs. 97.1% without HCC; $p < 0.001$), especially for active HCC (91.5% vs. 95.0% inactive HCC; $p < 0.001$), prior treatment failure (95.4% vs. 97.3% with treatment-naïve; $p < 0.001$), as well as renal dysfunction (95.5% vs. 96.9% without renal dysfunction; $p=0.003$), all had negative impacts on SVR12 rates, though the incremental differences were not large.

Figure 2 displayed SVR12 outcomes for patients stratified by GTs, liver cirrhosis, and prior treatment history. Overall, patients with TE cirrhosis had the lowest SVR12 (93.2%, 95% CI: 91.9–94.3%), compared with treatment-naïve cirrhotic (95.6%, 95% CI: 94.9–96.2%), TE non-cirrhotic (97.1%, 95% CI: 96.3–97.8%), and treatment-naïve non-cirrhotic (98.1%, 95% CI: 97.8–98.4%) ($p < 0.001$). Among GT3-infected patients, although the overall SVR12 was 95.1% (1,095/1,151, 95% CI: 93.7–96.3%), significantly lower SVR12 was observed in TE patients, regardless of cirrhosis status (85.7–89.1%). Notably, GT3b patients had lower SVR12 than those with GT3a (94.0% vs. 98.2%; $p < 0.001$). For GT3b-infected, TE patients had significantly lower SVR12 (10/13, 76.9%, 95% CI: 46.2–95.0%) compared to treatment-naïve patients (224/236, 94.9%, 95% CI: 91.3–97.4%). However, for GT3a-infected, the lowest SVR12 was observed in patients with TE CHC while it was still over 92%. Among GT6-infected patients, the overall SVR12 rate was 98.3% (449/457, 95% CI: 96.6–99.2%) (Fig. 1), with slightly lower response at 93.8% (95% CI: 79.2–99.2%) among those with TE cirrhosis, while SVR12 for all treatment-naïve

Treatment regimens	n/N	SVR12 (%) (95%CI)	P value
Overall	15349/15849	96.9 (96.6-97.1)	<0.001
DCV/ASV	2217/2357	94.1 (93.0-95.0)	
PrOD ± RBV	1562/1603	97.4 (96.5-98.2)	
EBR/GZR	834/847	98.2 (97.1-99.0)	
SOF/LDV ± RBV	4762/4856	98.1 (97.6-98.4)	
SOF/RBV	2680/2785	96.2 (95.5-96.9)	
SOF/DCV ± RBV	366/382	95.8 (93.3-97.6)	
GLE/PIB	1192/1219	97.8 (96.8-98.5)	
SOF/VEL ± RBV	1584/1640	96.6 (95.6-97.4)	
Others	154/160	96.3 (92.0-98.6)	
Sex			0.15
Male	7602/7866	96.6 (96.2-97.0)	
Female	7747/7983	97.0 (96.6-97.4)	
Age			0.001
< 60	6500/6673	97.4 (97.0-97.8)	
≥ 60	8849/9176	96.4 (96.0-96.8)	
Fibrosis stage			<0.001
CH	10118/10333	97.9 (97.6-98.2)	
LC	5217/5502	94.8 (94.2-95.4)	
History of HCC			<0.001
No	14043/14459	97.1 (96.8-97.4)	
Yes	1271/1352	94.0 (92.6-95.2)	
HCC status			<0.001
Inactive	979/1031	95.0 (93.4-96.2)	
Active	257/281	91.5 (87.6-94.5)	
Prior treatment			<0.001
Naive	11488/11803	97.3 (97.0-97.6)	
Experienced	3742/3922	95.4 (94.7-96.0)	
GT			<0.001
1	9942/10246	97.0 (96.7-97.4)	
2	3564/3686	96.7 (96.1-97.2)	
3	1095/1151	95.1 (93.7-96.3)	
4	43/47	91.5 (79.6-97.6)	
6	449/457	98.3 (96.6-99.2)	
Renal dysfunction			0.003
No	12949/13358	96.9 (96.6-97.2)	
Yes	1446/1514	95.5 (94.3-96.5)	

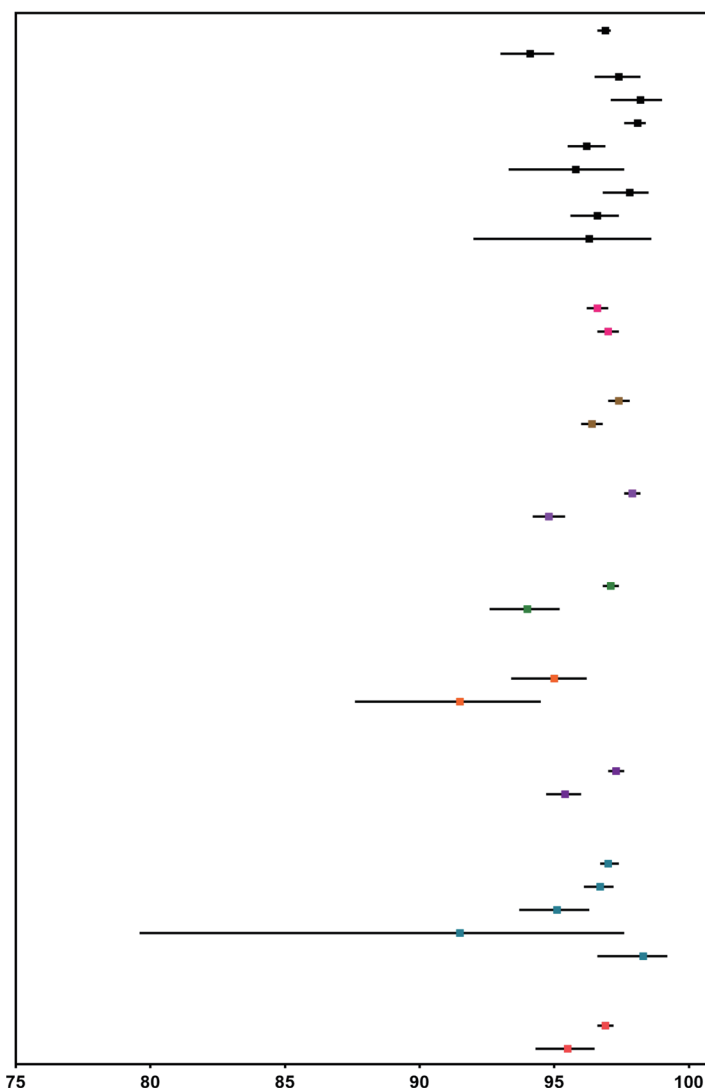


Fig. 1. Sustained virologic response at week 12 after end-of-treatment (SVR12) rates for patients with chronic hepatitis C. Renal dysfunction was defined as an estimated glomerular filtration rate (eGFR) less than 60 (mL/m/1.73 m²). HCC, Hepatocellular carcinoma; CH, Chronic hepatitis; LC, Liver cirrhosis; GT, Genotype; SOF, Sofosbuvir; VEL, Velpatasvir; RBV, Ribavirin; DCV, Daclatasvir; ASV, Asunaprevir; LDV, Ledipasvir; PrOD, Paritaprevir/ritonavir, ombitasvir + dasabuvir; EBR, Elbasvir; GZR, Grazoprevir; GLE, Glecaprevir; PIB, Pibrentasvir; CI, Confidence interval.

patients was 97.5% regardless of cirrhosis status. Additionally, among patients with GT1 or GT2 infection, significantly lower treatment responses were observed in patients with TE cirrhosis, though still over 90%.

The treatment responses in patients stratified by GT3 or GT6 and different regimens were shown in Supplementary Table 1. Among patients with GT3 infection, the best SVR12 was 96.2% with SOF/VEL±RBV (95% CI: 94.7–97.4%), followed by 95.8% with SOF/LDV±RBV (95% CI: 78.9–99.9%), 94.1% with GLE/PIB (95% CI: 85.6–98.4%), 91.5% with SOF + RBV (95% CI: 83.2–96.5%), and 88.2% with SOF + DCV±RBV (95% CI: 80.4–93.8%). Among patients with GT6 infection, the SVR12 rates were ≥ 97.5% with SOF-based regimens and 100% with GLE/PIB.

Factors associated with treatment response

Using a multivariable logistic regression analysis, significant independent factors associated with lower SVR12 included

age over 60 years (adjusted odds ratio [aOR], 0.74; *p*=0.01), prior treatment failure (aOR, 0.64; *p* < 0.001), cirrhosis (compensated: aOR, 0.55; *p* < 0.001; decompensated: aOR, 0.20; *p*<0.001), active HCC (aOR, 0.58; *p*=0.03, compared with non-HCC), and HCV GT3 and GT4 (aOR, 0.48; *p*=0.01 and aOR, 0.30; *p*=0.04; compared with GT1). However, being Asian (aOR, 1.81; *p* < 0.001) compared to non-Asian was a significant independent predictor for achieving SVR12, and there was no significant difference between inactive HCC and non-HCC (aOR, 0.86 [0.62–1.18]; *p*=0.34) (Table 2).

Among GT3-infected patients, significant factors independently associated with lower SVR12 included decompensated cirrhosis, with patients being 81% less likely to achieve SVR12 compared to those without cirrhosis (aOR, 0.19; *p* < 0.001), while Asians were significant independent predictors for achieving SVR12 (aOR, 4.05; *p*=0.01) (Table 3). For patients with GT3b, TE (OR 0.12, 95% CI 0.03–0.57; *p*=0.01) and HCV RNA >800,000 IU/mL (OR 3.94, 95% CI

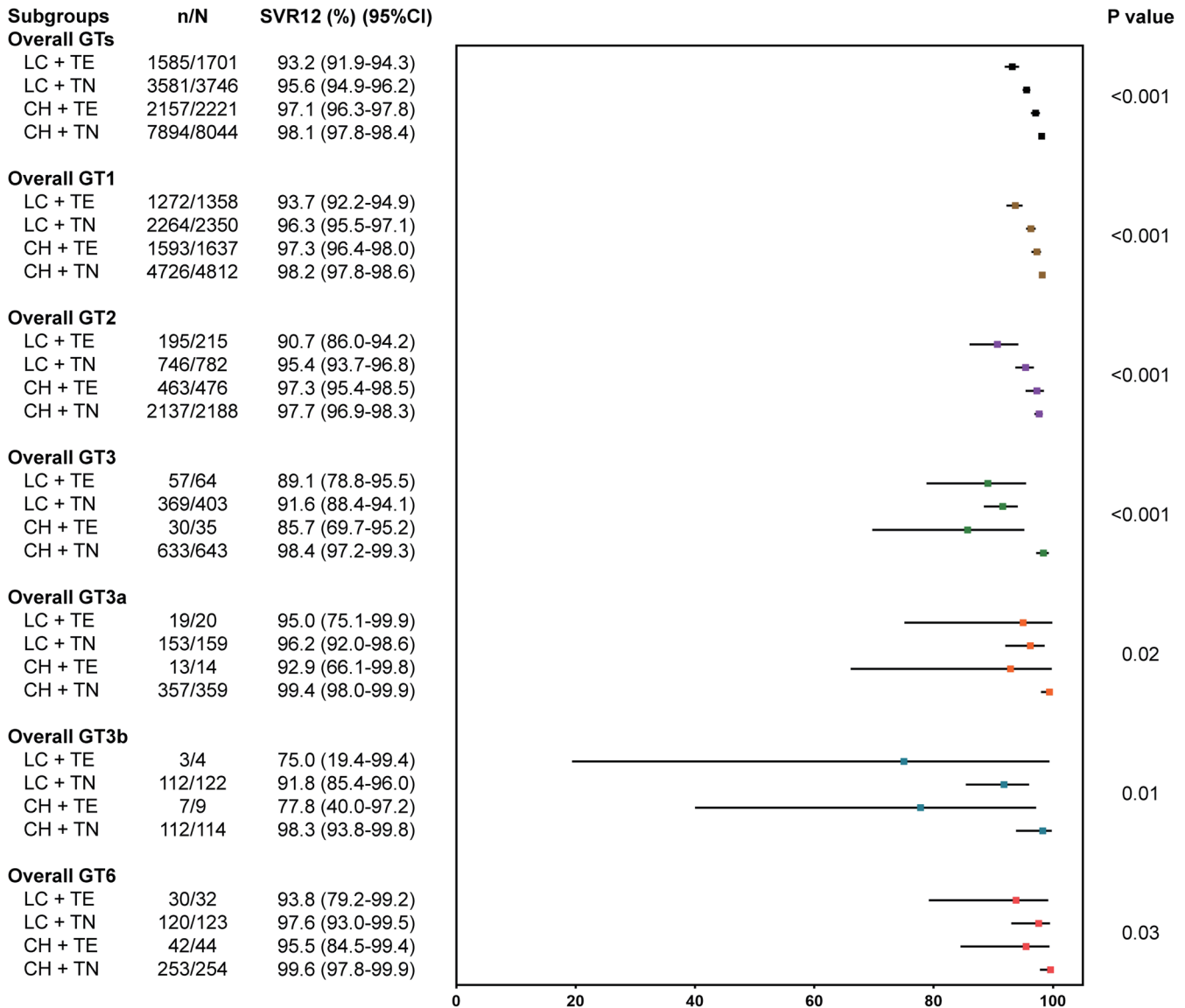


Fig. 2. Sustained virologic response at week 12 after end-of-treatment (SVR12) rates for patients with chronic hepatitis C virus stratified by genotypes (GTs), liver fibrosis stage, and prior treatment. CH, Chronic hepatitis; LC, Liver cirrhosis; TE, Treatment-experienced; TN, Treatment-naive; CI, Confidence interval.

1.14–13.61; $p=0.03$) were associated with treatment failure (Table 4). Among GT6-infected patients, active HCC was the strongest independent predictor for treatment failure (OR 0.01, 95% CI 0.0002–0.36; $p=0.01$), but this was not true for inactive HCC ($p=0.62$). Moreover, TE patients were 83% less likely to achieve SVR than treatment-naive patients (OR, 0.17; $p=0.03$) (Table 5).

Among GT1-infected patients, significant factors independently associated with lower SVR12 were age over 60 years (aOR, 0.69; $p=0.01$), prior treatment failure (aOR, 0.64; $p < 0.001$), decompensated and compensated cirrhosis (aOR, 0.19; $p < 0.001$ and aOR, 0.56; $p < 0.001$; respectively) (Supplementary Table 2). Among GT2-infected patients, decompensated cirrhosis (OR, 0.27; $p=0.003$) and compensated cirrhosis (OR, 0.47; $p < 0.001$) were significant factors independently associated with lower SVR12 (Supplementary Table 3).

Treatment tolerability

Supplementary Table 4 displayed the safety profile for patients stratified by different regimens. The overall incidence of AEs was low, with the most common AEs being fatigue (5.5%), pruritus (2.7%), insomnia (1.9%), headache (1.8%), and nausea (1.5%). AEs by DAA regimens are shown in Supplementary Table 4. Additionally, 319 patients (2.18%) discontinued treatment prematurely. The most common causes for early discontinuation were liver injury (0.3%), non-compliance (0.2%), and viral breakthrough (0.2%), with other reasons including patient choice, loss to follow-up, HCC diagnosis/recurrence, and other AEs such as fever, nausea, vomiting, and pruritus. Higher rates of treatment interruption were seen in patients receiving DCV/ASV (6.4%, 144/2,249), PrOD±RBV (3.2%, 43/1,346), and GLE/PIB (2.2%, 24/1,115), while it was less than 1.3% for other regi-

Table 2. Univariate and multivariate analyses of baseline factors associated with SVR12 in patients with HCV infection (all GTs)[§]

Factors	Category	Univariate Analysis		Multivariate Analysis	
		Odds Ratio (95% CI)	p-Value	Odds Ratio (95% CI)	p-Value
Age, years	≤60	1 (Referent)		1 (Referent)	
	>60	0.72 (0.60–0.87)	0.001	0.74 (0.59–0.92)	0.01
Sex	Female	1 (Referent)		1 (Referent)	
	Male	0.88 (0.73–1.05)	0.15	0.91 (0.74–1.11)	0.33
Ethnicity	Non-Asian	1 (Referent)		1 (Referent)	
	Asian	1.94 (1.51–2.49)	< 0.001	1.81 (1.30–2.53)	< 0.001
Prior treatment	No	1 (Referent)		1 (Referent)	
	Yes	0.57 (0.47–0.69)	< 0.001	0.64 (0.52–0.78)	< 0.001
Liver fibrosis	Non-cirrhosis	1 (Referent)		1 (Referent)	
	Compensated cirrhosis	0.45 (0.37–0.55)	< 0.001	0.55 (0.44–0.68)	< 0.001
	Decompensated cirrhosis	0.18 (0.13–0.24)	< 0.001	0.20 (0.14–0.29)	< 0.001
HCC	Non-HCC	1 (Referent)		1 (Referent)	
	Ablated HCC	0.56 (0.42–0.75)	< 0.001	0.86 (0.62–1.18)	0.35
	Active HCC	0.32 (0.21–0.49)	< 0.001	0.58 (0.36–0.94)	0.03
CKD, eGFR < 60	No	1 (Referent)		1 (Referent)	
	Yes	0.67 (0.52–0.87)	0.003	0.85 (0.63–1.13)	0.26
HBV co-infection	No	1 (Referent)			
	Yes	1.54 (0.72–3.27)	0.27	–	–
HIV co-infection	No	1 (Referent)			
	Yes	4.25 (0.59–30.6)	0.15	–	–
HCV RNA, IU/mL	≤800,000	1 (Referent)		1 (Referent)	
	>800,000	1.17 (0.97–1.41)	0.10	1.01 (0.83–1.24)	0.91
Genotypes	GT1	1 (Referent)		1 (Referent)	
	GT2	0.89 (0.72–1.11)	0.30	0.68 (0.42–1.09)	0.11
	GT3	0.60 (0.47–0.80)	0.001	0.48 (0.29–0.81)	0.01
	GT4	0.33 (0.12–0.92)	0.03	0.30 (0.09–0.94)	0.04
	GT6	1.72 (0.85–3.48)	0.14	0.96 (0.43–2.18)	0.93
DAA regimens	DCV/ASV	1 (Referent)		1 (Referent)	
	PrOD±RBV	2.41 (1.69–3.43)	< 0.001	2.96 (2.00–4.36)	< 0.001
	EBR/GZR	3.50 (2.04–6.00)	< 0.001	3.73 (1.95–7.11)	< 0.001
	SOF/LDV±RBV	3.20 (2.45–4.17)	< 0.001	3.54 (2.63–4.76)	< 0.001
	SOF/RBV	1.61 (1.24–2.09)	< 0.001	1.96 (1.15–3.35)	0.01
	SOF/DCV±RBV	1.44 (0.85–2.45)	0.17	2.55 (1.27–5.12)	0.01
	GLE/PIB	2.79 (1.84–4.23)	< 0.001	3.29 (1.95–5.57)	< 0.001
	SOF/VEL±RBV	1.79 (1.30–2.45)	< 0.001	3.07 (1.79–5.27)	< 0.001
	Others	1.62 (0.70–3.73)	0.26	3.46 (1.34–8.93)	0.01

[§]5,995 patients with data for all variables, and 13,971 of 15,849 (88.2%) patients were included in the multivariable model, which does not include HBV and HIV. HBV and HIV were not used in the multivariable models since they were not significant predictors in the univariable analysis. HCV, Hepatitis C virus; HBV, Hepatitis B virus; HIV, Human immunodeficiency virus; CKD, Chronic kidney disease; eGFR, Estimated glomerular filtration rate; HCC, Hepatocellular carcinoma; GT, Genotype; SVR, Sustained virological response; DAA, Direct-acting antiviral; SOF, Sofosbuvir; VEL, Velpatasvir; RBV, Ribavirin; DCV, Daclatasvir; ASV, Asunaprevir; LDV, Ledipasvir; PrOD, Paritaprevir/ritonavir, ombitasvir + dasabuvir; EBR, Elbasvir; GZR, Grazoprevir; GLE, Glecaprevir; PIB, Pibrentasvir; CI, Confidence interval.

Table 3. Univariate and multivariate analysis of baseline factors associated with SVR12 in patients with HCV GT3^s

Factors	Category	Univariate analysis		Multivariate analysis	
		Odds Ratio (95% CI)	p-Value	Odds Ratio (95% CI)	p-Value
Age, years	≤60	1 (Referent)		1 (Referent)	
	>60	0.48 (0.26–0.90)	0.02	1.16 (0.52–2.62)	0.71
Sex	Female	1 (Referent)		1 (Referent)	
	Male	0.86 (0.43–1.74)	0.68	0.72 (0.31–1.64)	0.43
Ethnicity	Non-Asian	1 (Referent)		1 (Referent)	
	Asian	5.19 (2.98–9.03)	< 0.001	4.05 (1.43–11.5)	0.01
Prior treatment	No	1 (Referent)		1 (Referent)	
	Yes	0.32 (0.16–0.62)	0.001	0.49 (0.20–1.19)	0.12
Liver fibrosis	Non cirrhosis	1 (Referent)		1 (Referent)	
	Compensated cirrhosis	0.40 (0.20–0.81)	0.01	0.49 (0.22–1.10)	0.08
	Decompensated cirrhosis	0.10 (0.05–0.21)	< 0.001	0.19 (0.08–0.46)	< 0.001
HCC	Non-HCC	1 (Referent)		1 (Referent)	
	Ablated HCC	0.29 (0.11–0.75)	0.01	0.81 (0.25–2.58)	0.72
	Active HCC	0.18 (0.07–0.49)	0.001	0.37 (0.20–1.37)	0.14
CKD, eGFR < 60	No	1 (Referent)			
	Yes	0.54 (0.21–1.35)	0.18	–	–
HBV co-infection	No	1 (Referent)			
	Yes	2.98 (0.18–49.5)	0.45	–	–
HIV co-infection	No	1 (Referent)			
	Yes	1.57 (0.30–8.20)	0.59	–	–
HCV RNA, IU/mL	≤800,000	1 (Referent)		1 (Referent)	
	>800,000	2.04 (1.17–3.55)	0.01	1.02 (0.52–2.03)	0.95
Genotypes	GT3a	1 (Referent)		1 (Referent)	
	GT3b	0.29 (0.13–0.65)	0.003	0.55 (0.19–1.58)	0.27
	GT3 unspecified	0.19 (0.10–0.39)	< 0.001	0.59 (0.21–1.62)	0.30
DAA regimens	SOF/DCV±RBV	1 (Referent)		1 (Referent)	
	SOF/RBV	1.39 (0.53–3.61)	0.50	0.93 (0.29–2.91)	0.90
	GLE/PIB	1.98 (0.64–6.09)	0.23	1.68 (0.43–6.56)	0.45
	SOF/VEL±RBV	3.48 (1.75–6.92)	< 0.001	1.32 (0.49–3.60)	0.59
	SOF/LDV	2.16 (0.37–12.5)	0.39	2.54 (0.36–17.7)	0.35

^s861 patients with data for all variables, and 1,001 of 1,151 (87.0%) patients were included in the multivariable model, which does not include HBV and HIV. HBV and HIV were not used in the multivariable models since they were not significant predictors in the univariable analysis. HCV, Hepatitis C virus; HBV, Hepatitis B virus; HIV, Human immunodeficiency virus; CKD, Chronic kidney disease; eGFR, Estimated glomerular filtration rate; HCC, Hepatocellular carcinoma; GT, Genotype; SVR, Sustained virological response; DAA, Direct-acting antiviral; SOF, Sofosbuvir; VEL, Velpatasvir; RBV, Ribavirin; DCV, Daclatasvir; LDV, Ledipasvir; GLE, Glecaprevir; PIB, Pibrentasvir; CI, Confidence interval.

mens. Serious adverse events (SAEs) occurred in 90 patients (0.6%), with the most common SAEs being decompensation (0.06%), HCC progression (0.03%), renal events (0.02%), cerebral hemorrhage (0.02%), and anemia (0.02%).

Discussion

The emergence of DAAs has dramatically transformed the HCV treatment landscape, but clinical practice patterns and HCV GT distribution vary by geographic region. We presented a large, multinational study including patients infected with HCV GTs 1–6 who received DAAs in a "real-world" setting.

Overall, the SVR12 rate was 96.9%, with rates exceeding 90% in almost all subgroups, including patients with advanced age, renal dysfunction, prior treatment failure, cirrhosis, and HCC. Among the GTs, the cure rates were 97.0% for GT1, 96.7% for GT2, 95.1% for GT3, 91.5% for GT4, and 98.3% for GT6 (Fig. 1). The single patient with GT5 was treatment-naïve, noncirrhotic, and was cured with SOF/LDV. Independent predictors of lower SVR12 included age over 60 years, prior treatment failure, cirrhosis, active HCC, and GT3 or GT4. Conversely, being Asian was a significant predictor of achieving SVR12, and there was no significant difference in SVR12 between patients with non-HCC and inactive HCC.

Table 4. Univariate and multivariate analysis of baseline factors associated with SVR12 in patients with HCV GT3b[§]

Factors	Category	Univariate analysis		Multivariate analysis	
		Odds Ratio (95% CI)	p-Value	Odds Ratio (95% CI)	p-Value
Age, years	≤60	1 (Referent)		1 (Referent)	
	>60	0.64 (0.13–3.02)	0.57	0.49 (0.10–2.48)	0.39
Sex	Female	1 (Referent)		1 (Referent)	
	Male	1.34 (0.44–4.06)	0.61	1.09 (0.30–3.96)	0.90
Prior treatment	No	1 (Referent)		1 (Referent)	
	Yes	0.18 (0.04–0.73)	0.02	0.12 (0.03–0.57)	0.01
Liver fibrosis	Non cirrhosis	1 (Referent)		–	–
	Compensated cirrhosis	0.82 (0.15–4.64)	0.83	–	–
	Decompensated cirrhosis	0.40 (0.07–2.33)	0.31	–	–
HCC	No	1 (Referent)		–	–
	Yes	0.60 (0.13–2.87)	0.53	–	–
CKD, eGFR < 60	No	1 (Referent)		–	–
	Yes	1.24 (0.15–9.99)	0.84	–	–
HIV co-infection	No	1 (Referent)		–	–
	Yes	1.84 (0.23–14.6)	0.56	–	–
HCV RNA, IU/mL	≤800,000	1 (Referent)		1 (Referent)	
	>800,000	3.87 (1.16–13.0)	0.03	3.94 (1.14–13.61)	0.03
DAA regimens	SOF/VEL±RBV	1 (Referent)		–	–
	Others	1.37 (0.42–4.43)	0.60	–	–

[§]167 patients with data for all variables, and 236 of 249 (94.8%) patients were included in the multivariable model, which does not include HIV. There are not enough patients for variables of HBV and active/ablated HCC. HCV, Hepatitis C virus; HBV, Hepatitis B virus; HIV, Human immunodeficiency virus; CKD, Chronic kidney disease; eGFR, Estimated glomerular filtration rate; HCC, Hepatocellular carcinoma; GT, Genotype; SVR, Sustained virological response; DAA, Direct-acting antiviral; SOF, Sofosbuvir; VEL, Velpatasvir; RBV, Ribavirin; DCV, Daclatasvir; LDV, Ledipasvir; GLE, Glecaprevir; PIB, Pibrentasvir; CI, Confidence interval.

The study also found that the overall incidence of AEs was low, with common AEs including fatigue, pruritus, insomnia, headache, and nausea. SAEs were rare (0.6%), and none led to death. Early treatment discontinuation was also uncommon in this large cohort (2.2%).

GT3 is the second most common HCV GT worldwide, and patients infected with GT3, especially the 3b subtype, remain a difficult-to-cure population.^{12,13} Our results showed an overall high SVR12 rate of 95.1% for GT3 patients, but a lower SVR12 in TE patients with or without cirrhosis (85.7–89.1%), largely due to TE patients infected with GT3b (75–77%). Moreover, decompensated cirrhosis, rather than compensated cirrhosis, was an independent predictor of treatment failure in GT3 patients, and a high HCV viral load increased the risk of treatment failure by 3.9 times compared to patients with a low HCV RNA. A large cohort study from Thailand showed an overall SVR12 of 96.7% in HCV GT3 patients who received SOF-based±RBV regimens, but it was 88.4% in patients with decompensated cirrhosis, and 57.1% for TE decompensated cirrhotic patients with GT3b.¹² A multicenter phase 3 clinical trial in Asia showed an overall SVR12 of 86% in GT3 patients treated with SOF/VEL, while it was only 50% in GT3b patients with cirrhosis.¹³

On the other hand, our study found that SOF-based±RBV regimens were highly efficacious in HCV GT3-infected patients, with the highest SVR12 of 96.2% achieved by SOF/VEL±RBV (98.1% for GT3a and 93.4% for GT3b) (Supplementary Table 1). This supports the current recommendation for GT3 treatment with an IIB evidence grade by the

2023 HCV guidelines of the American Association for the Study of Liver Diseases and the Infectious Disease Society of America.¹⁶ SOF/VEL, as a protease inhibitor-free regimen, was recommended for treatment-naïve or non-cirrhotic TE patients with GT3 infection for 12 weeks, or in combination with RBV for decompensated cirrhosis for 12/24 weeks.^{16,17} A multicenter phase 2 clinical study across Australia, New Zealand, and the United States found that SOF/VEL combination therapy for TE GT3 patients was highly effective, with an SVR12 of 88% without RBV and 96% with RBV.¹⁸ A phase 2 clinical study from Spain showed an SVR12 of 91% with SOF/VEL and 96% with SOF/VEL+RBV in GT3 patients with compensated cirrhosis.¹⁹ Furthermore, a phase 3 clinical study in the United States showed that 12-week SOF/VEL, 24-week SOF/VEL, or 12-week SOF/VEL + RBV in GT3 patients with decompensated cirrhosis achieved SVR12 rates of 50%, 50%, and 85%, respectively.²⁰ Notably, SOF/VEL + RBV treatment of refractory GT3 patients can still achieve a high SVR12 rate, including patients with GT3b (93.4% in our study). High SVR12 rates among GT3 patients have been shown in real-world settings using SOF/VEL; however, few patients with GT3b were included.²¹ In settings where the cost and availability of HCV genotyping may be limited (e.g., HCV microelimination through outreach programs) and the prevalence of GT3b is low, pangenotypic SOF-based DAA regimens could be a reasonable and cost-effective approach. However, the efficacy of this regimen in GT3b patients with treatment experience or cirrhosis needs further evaluation. Therefore, despite the relatively high SVR12 based on DAA

Table 5. Univariate and multivariate analysis of baseline factors associated with SVR12 in patients with HCV GT6^s

Factors	Category	Univariate analysis		Multivariate analysis	
		Odds Ratio (95% CI)	p-Value	Odds Ratio (95% CI)	p-Value
Age, years	≤60	1 (Referent)		1 (Referent)	
	>60	1.02 (0.27–3.83)	0.97	1.35 (0.26–7.14)	0.73
Sex	Female	1 (Referent)		1 (Referent)	
	Male	0.43 (0.10–1.89)	0.27	0.56 (0.11–2.91)	0.50
Ethnicity	Non-Asian	1 (Referent)			
	Asian	7.54 (0.36–156.86)	0.19	–	–
Prior treatment	No	1 (Referent)		1 (Referent)	
	Yes	0.19 (0.05–0.73)	0.02	0.17 (0.03–0.87)	0.03
Liver fibrosis	Non cirrhosis	1 (Referent)		1 (Referent)	
	Compensated cirrhosis	0.30 (0.07–1.23)	0.09	0.64 (0.12–3.36)	0.60
	Decompensated cirrhosis	0.48 (0.02–9.66)	0.63	1.86 (0.03–117.17)	0.77
HCC	Non-HCC	1 (Referent)		1 (Referent)	
	Ablated HCC	0.12 (0.02–0.80)	0.03	0.45 (0.02–10.6)	0.62
	Active HCC	0.04 (0.01–0.33)	0.002	0.01 (0.0002–0.36)	0.01
CKD, eGFR < 60	No	1 (Referent)			
	Yes	0.77 (0.13–4.52)	0.77	–	–
HBV co-infection	No	1 (Referent)			
	Yes	0.26 (0.04–1.60)	0.15	–	–
HIV co-infection	No	1 (Referent)			
	Yes	0.29 (0.02–5.68)	0.42	–	–
HCV RNA, IU/mL	≤800,000	1 (Referent)			
	>800,000	1.17 (0.26–5.29)	0.84	–	–
DAA regimens	SOF/DCV±RBV	1 (Referent)		1 (Referent)	
	SOF/LDV±RBV	1.45 (0.07–28.1)	0.81	2.41 (0.09–62.5)	0.60
	SOF/VEL±RBV	1.03 (0.05–20.9)	0.98	2.44 (0.07–83.7)	0.62

^s260 patients with data for all variables, and 338 of 457 (74.0%) patients were included in the multivariable model, which does not include HBV and HIV. HBV and HIV were not used in the multivariable models since they were not significant predictors in the univariable analysis. HCV, Hepatitis C virus; HBV, Hepatitis B virus; HIV, Human immunodeficiency virus; CKD, Chronic kidney disease; eGFR, Estimated glomerular filtration rate; HCC, Hepatocellular carcinoma; GT, Genotype; SVR, Sustained virological response; DAA, Direct-acting antiviral; SOF, Sofosbuvir; VEL, Velpatasvir; RBV, Ribavirin; DCV, Daclatasvir; LDV, Ledipasvir; CI, Confidence interval.

achieved in patients with GT3, the treatment of HCV 3b subtype infection remains a clinical challenge, especially when combined with cirrhosis and/or prior treatment failure, as well as high HCV viral load.

Our study of over 15,000 diverse patients, including 1,352 HCC patients (281 with active HCC) from both the East and the West, confirmed an important finding: inactive HCC was not associated with a lower SVR12 compared to non-HCC patients. Thus, the presence of HCC should not discourage providers from treating viremic HCV patients with DAAs though treatment should generally be delayed until HCC has been adequately treated since active HCC was associated with lower SVR, consistent with prior reports.^{22,23} The current study expanded on prior knowledge of the interaction between HCC and DAA treatment, including findings from an earlier study from REAL-C that included only patients from Asia which compared SVR12 rates of 436 pairs of matched patients with HCV/HCC and HCV/non-HCC patients and found that SVR12 for active HCC was significantly lower than that with inactive HCC (85.5% vs. 93.7%; $p=0.03$). How-

ever, there was no statistically significant difference between HCC (92.7%) and non-HCC (95.0%) groups.²⁴ It should also be noted that the SVR12 for active HCC in our study was still fairly high at 91.5% (Fig.1), supporting prior suggestions that HCV-related HCC should be treated with DAAs based on a risk-benefit evaluation.^{25,26} However, DAA-based treatment recommendations for patients with HCV-related HCC have not been well-established across guidelines,^{16,17} despite increasing evidence that HCV-cured HCC patients have significantly improved overall and liver-related survival compared to those without SVR12.^{27,28} Therefore, additional patient and provider education and clearer guideline recommendations are needed. This is especially important given the dismally poor median 20-month overall survival for HCV-HCC patients. Those who received DAA treatment had a higher five-year survival rate compared to those untreated (47.2% vs. 35.2%). Additionally, the DAA utilization rate was low at 23.5% in a nationwide cohort of 3,922 U.S. patients with private insurance.^{29,30}

Globally, data regarding the clinical features and treatment

of HCV GT6 are limited. In this multicenter cohort, our study included 457 patients with HCV GT6, 99% of whom were from Asia (59.5% Vietnamese and 37.4% Chinese). Our study reported an excellent SVR12 rate of 98.3% among patients with GT6 infection, including those with TE cirrhosis (93.8%). HCV GT6 is mostly found in Southern China and Southeast Asia and has a higher prevalence in certain populations, such as intravenous drug users.³¹ A study from Hong Kong showed that the proportion of HCV GT6 infection among intravenous drug users was approximately 58%, significantly higher than among non-intravenous drug users (23%).³² Given the high cure rate of HCV GT6 patients receiving DAA treatment, including those with TE cirrhosis, it is recommended that people at high risk of HCV GT6 infection, especially intravenous drug users, should be screened and treated early to achieve the 2030 hepatitis C elimination target.

There were some limitations in our study. Firstly, this study is a real-world investigation, and patients were not randomly assigned to a specific DAA regimen. Instead, DAA treatment options were chosen based on the availability of DAAs in different regions at the time and the judgment of clinicians. Despite this, our overall SVR12 remained high. Secondly, although we performed multivariable regression analyses to adjust for potential confounders, residual confounding effects may remain, and not all patients had detailed records of important factors such as co-infection with HBV or HIV.

Conclusion

This large international multicenter observational study of patients with diverse GTs showed an overall SVR12 rate of 96.9%, despite including many patients with cirrhosis, HCC, prior treatment failure, and the use of older DAAs. Our study demonstrates that for refractory GT3 patients, including those with TE cirrhosis, SOF/VEL plus RBV can achieve high cure rates, lending further support to recent practice guideline recommendations. However, the efficacy of this regimen for the GT3b subtype with prior treatment failure or cirrhosis and high HCV viral load remains to be evaluated. Meanwhile, the study observed a high overall SVR12 for GT6, a prevalent GT among injection drug users who should be screened and promptly treated. Our study also confirmed high SVR12 rates for patients with HCC, though slightly lower for those with active HCC, underscoring the need for additional guideline recommendations to increase DAA utilization in this population.

Funding

This study is partially supported by an investigator-initiated research grant (IN-US-334-4309) from Gilead Sciences to Stanford University. The authors independently collected the data, designed and performed all study analyses, and drafted the manuscript. The funding source had no role in the study design, data collection, data analysis or interpretation, report writing, or the decision to submit the paper for publication.

Conflict of interest

FJ: Speaker fees: Gilead Sciences, MSD, and Ascleptis. Consultancy: Gilead Sciences, MSD. FJ has been an Editorial Board Member of *Journal of Clinical and Translational Hepatology* since 2023. YJW: Speaker fees: Gilead Science, AbbVie. Research Grant: Medicine Academic Clinical Program, SingHealth, Singapore. YJW has been an Editorial Board Member of *Journal of Clinical and Translational Hepatology*

since 2020. HT: Speaker fees: Gilead Science, AbbVie, Eisai, Fujifilm WAKO, Takeda, Kowa, Terumo, Astra Zeneca. VWSW: Consultancy: AbbVie, Boehringer Ingelheim, Echo-sens, Gilead Sciences, Intercept, Inventiva, Novo Nordisk, Pfizer, Sagimet Biosciences, TARGET PharmaSolutions, Virsina. Speaker fees: Abbott, AbbVie, Gilead Sciences, Novo Nordisk, Unilab. Research grants: Gilead Sciences. Stock: Co-founder of Illuminatio Medical Technology Limited. MA: Speakers' fees: AbbVie, Gilead Sciences. SD: Speakers fees: Gilead Sciences. MFY: Speakers' fees: Fujirebio Incorporation, Gilead Sciences, Roche, Sysmex Corporation. Consulting or advisory board: AbbVie, Abbott Diagnostics, Aligos Therapeutics, AiCuris, Antios Therapeutics, Arbutus Biopharma, Arrowhead Pharmaceuticals, Assembly Biosciences, Clear B Therapeutics, Dicerna Pharmaceuticals, Finch Therapeutics, Fujirebio Incorporation, GlaxoSmithKline, Gilead Sciences, Immunocore, Janssen, Precision BioSciences, Roche, Sysmex Corporation, Tune Therapeutics, Vir Biotechnology and Visirna Therapeutics. Research grant: AbbVie, Assembly Biosciences, Arrowhead Pharmaceuticals, Fujirebio Incorporation, Gilead Sciences, Immunocore, Sysmex Corporation and Roche. MFY has been an Associate Editor of *Journal of Clinical and Translational Hepatology* since 2021. CW: Research grant: Gilead Sciences. MLYu: Research support (grant) from Abbvie, BMS, Gilead, Merck, and Roche diagnostics. Consultant of Abbvie, BMS, Gilead, Roche, and Roche diagnostics. Speaker of Abbvie, BMS, Eisai, Gilead, Roche, and Roche diagnostics. MLYu has been an Associate Editor of *Journal of Clinical and Translational Hepatology* since 2023. MHN: Research grants via institution: Pfizer, Enanta, Astra Zeneca, GSK, Delfi, Innogen, Exact Science, CurveBio, Gilead, Vir Biotech, Helio Health, National Cancer Institute, Glycotest. Consulting/Advisory board: Intercept, Exact Science, Gilead, GSK. JL, MLYe, WLC and JFH have been Editorial Board Members of *Journal of Clinical and Translational Hepatology* since 2022. HR has been an Editor-in-Chief of *Journal of Clinical and Translational Hepatology* since 2013. The other authors have no conflict of interests related to this publication.

Author contributions

Guarantor of the article: MHN. Specific author contributions: study design: FJ, ST, and MHN. Data collection: all the authors. Data analysis: ST, FJ and MHN. Data interpretation: all the authors. Drafting of the article: FJ, ST and MHN. Study concept and study supervision: MHN.

Ethical statement

The study was conducted according to the Helsinki Declaration of 1975, as revised in 2008, and was approved by the Institutional Review Board at Stanford University, Stanford, California, USA (No. 40878, No. 13927), and participating study centers. The written informed consent was obtained from the patients.

Data sharing statement

Due to privacy policy, data are not publicly available.

References

- [1] Thrift AP, El-Serag HB, Kanwal F. Global epidemiology and burden of HCV infection and HCV-related disease. *Nat Rev Gastroenterol Hepatol* 2017;14(2):122–132. doi:10.1038/nrgastro.2016.176, PMID:27924080.
- [2] Polaris Observatory HCV Collaborators. Global change in hepatitis C virus prevalence and cascade of care between 2015 and 2020: a modelling study. *Lancet Gastroenterol Hepatol* 2022;7(5):396–415. doi:10.1016/

- S2468-1253(21)00472-6, PMID:35180382.
- [3] Ogawa E, Chien N, Kam L, Yeo YH, Ji F, Huang DQ, *et al*. Association of Direct-Acting Antiviral Therapy With Liver and Nonliver Complications and Long-term Mortality in Patients With Chronic Hepatitis C. *JAMA Intern Med* 2023;183(2):97–105. doi:10.1001/jamainternmed.2022.5699, PMID:36508196.
 - [4] Calvaruso V, Craxi A. Hepatic benefits of HCV cure. *J Hepatol* 2020;73(6):1548–1556. doi:10.1016/j.jhep.2020.08.006, PMID:32777323.
 - [5] McCombs J, Matsuda T, Tonnu-Mihara I, Saab S, Hines P, L'italien G, *et al*. The risk of long-term morbidity and mortality in patients with chronic hepatitis C: results from an analysis of data from a Department of Veterans Affairs Clinical Registry. *JAMA Intern Med* 2014;174(2):204–212. doi:10.1001/jamainternmed.2013.12505, PMID:24193887.
 - [6] Yeo YH, He X, Lv F, Zhao Y, Liu Y, Yang JD, *et al*. Trends of Cirrhosis-related Mortality in the USA during the COVID-19 Pandemic. *J Clin Transl Hepatol* 2021;9(3):419–427. doi:10.14218/JCTH.2020.00097, PMID:34221928.
 - [7] Chen CY, Huang CF, Cheng PN, Tseng KC, Lo CC, Kuo HT, *et al*. Factors associated with treatment failure of direct-acting antivirals for chronic hepatitis C: A real-world nationwide hepatitis C virus registry programme in Taiwan. *Liver Int* 2021;41(6):1265–1277. doi:10.1111/liv.14849, PMID:33655714.
 - [8] Wang X, Wei L. Direct-acting Antiviral Regimens for Patients with Chronic Infection of Hepatitis C Virus Genotype 3 in China. *J Clin Transl Hepatol* 2021;9(3):419–427. doi:10.14218/JCTH.2020.00097, PMID:34221928.
 - [9] Messina JP, Humphreys I, Flaxman A, Brown A, Cooke GS, Pybus OG, *et al*. Global distribution and prevalence of hepatitis C virus genotypes. *Hepatology* 2015;61(1):77–87. doi:10.1002/hep.27259, PMID:25069599.
 - [10] Chen Y, Yu C, Yin X, Guo X, Wu S, Hou J. Hepatitis C virus genotypes and subtypes circulating in Mainland China. *Emerg Microbes Infect* 2017;6(11):e95. doi:10.1038/em.2017.77, PMID:29089588.
 - [11] Ji F, Li J, Liu L, Liang J, Wang X, Liu J, *et al*. High hepatitis C virus cure rates with approved interferon-free direct-acting antivirals among diverse mainland Chinese patients including genotypes 3a and 3b. *J Gastroenterol Hepatol* 2021;36(3):767–774. doi:10.1111/jgh.15192, PMID:32840326.
 - [12] Charatcharoenwithaya P, Wongpaitoon V, Komolmit P, Sukeepaisarnjaroen W, Tangkijvanich P, Piratvisuth T, *et al*. Real-world effectiveness and safety of sofosbuvir and nonstructural protein 5A inhibitors for chronic hepatitis C genotype 1, 2, 3, 4, or 6: a multicentre cohort study. *BMC Gastroenterol* 2020;20(1):47. doi:10.1186/s12876-020-01196-0, PMID:32138687.
 - [13] Wei L, Lim SG, Xie Q, Văn KN, Piratvisuth T, Huang Y, *et al*. Sofosbuvir-velpatasvir for treatment of chronic hepatitis C virus infection in Asia: a single-arm, open-label, phase 3 trial. *Lancet Gastroenterol Hepatol* 2019;4(2):127–134. doi:10.1016/S2468-1253(18)30343-1, PMID:30555048.
 - [14] Hlaing NKT, Nangia G, Tun KT, Lin S, Maung MZ, Myint KT, *et al*. High sustained virologic response in genotypes 3 and 6 with generic NS5A inhibitor and sofosbuvir regimens in chronic HCV in myanmar. *J Viral Hepat* 2019;26(10):1186–1199. doi:10.1111/jvh.13133, PMID:31104344.
 - [15] Wong YJ, Tran S, Huang CF, Hsu YC, Preda C, Toyoda H, *et al*. Real-world treatment outcome with protease inhibitor direct-acting antiviral in advanced hepatitis C cirrhosis: a REAL-C study. *Hepatol Int* 2023;17(5):1150–1161. doi:10.1007/s12072-023-10547-4, PMID:37273170.
 - [16] Bhattacharya D, Aronsohn A, Price J, Lo Re V, AASLD-IDSA HCV Guidance Panel. Hepatitis C Guidance 2023 Update: AASLD-IDSA Recommendations for Testing, Managing, and Treating Hepatitis C Virus Infection. *Clin Infect Dis* 2023;ciad319. doi:10.1093/cid/ciad319, PMID:37229695.
 - [17] European Association for the Study of the Liver, EASL Governing Board representative, Panel members. EASL recommendations on treatment of hepatitis C: Final update of the series. *J Hepatol* 2020;73(5):1170–1218. doi:10.1016/j.jhep.2020.08.018, PMID:32956768.
 - [18] Pianko S, Fiamm SL, Shiffman ML, Kumar S, Strasser SI, Dore GJ, *et al*. Sofosbuvir Plus Velpatasvir Combination Therapy for Treatment-Experienced Patients With Genotype 1 or 3 Hepatitis C Virus Infection: A Randomized Trial. *Ann Intern Med* 2015;163(11):809–817. doi:10.7326/M15-1014, PMID:26551263.
 - [19] Esteban R, Pineda JA, Calleja JL, Casado M, Rodríguez M, Turnes J, *et al*. Efficacy of Sofosbuvir and Velpatasvir, With and Without Ribavirin, in Patients With Hepatitis C Virus Genotype 3 Infection and Cirrhosis. *Gastroenterology* 2018;155(4):1120–1127.e4. doi:10.1053/j.gastro.2018.06.042, PMID:29958855.
 - [20] Curry MP, O'Leary JG, Bzowej N, Muir AJ, Korenblat KM, Fenkel JM, *et al*. Sofosbuvir and Velpatasvir for HCV in Patients with Decompensated Cirrhosis. *N Engl J Med* 2015;373(27):2618–2628. doi:10.1056/NEJMoa1512614, PMID:26569658.
 - [21] Wong YJ, Thurairajah PH, Kumar R, Tan J, Fock KM, Law NM, *et al*. Efficacy and safety of sofosbuvir/velpatasvir in a real-world chronic hepatitis C genotype 3 cohort. *J Gastroenterol Hepatol* 2021;36(5):1300–1308. doi:10.1111/jgh.15324, PMID:33217040.
 - [22] Ji F, Yeo YH, Wei MT, Ogawa E, Enomoto M, Lee DH, *et al*. Sustained virologic response to direct-acting antiviral therapy in patients with chronic hepatitis C and hepatocellular carcinoma: A systematic review and meta-analysis. *J Hepatol* 2019;71(3):473–485. doi:10.1016/j.jhep.2019.04.017, PMID:31096005.
 - [23] Saberi B, Dadabhai AS, Durand CM, Philosophe B, Cameron AM, Sulkowski MS, *et al*. Challenges in treatment of hepatitis C among patients with hepatocellular carcinoma. *Hepatology* 2017;66(2):661–663. doi:10.1002/hep.29126, PMID:28211073.
 - [24] Ogawa E, Toyoda H, Iio E, Jun DW, Huang CF, Enomoto M, *et al*. Hepatitis C Virus Cure Rates Are Reduced in Patients With Active but Not Inactive Hepatocellular Carcinoma: A Practice Implication. *Clin Infect Dis* 2020;71(11):2840–2848. doi:10.1093/cid/ciz1160, PMID:31777940.
 - [25] Reig M, Cabibbo G. Antiviral therapy in the palliative setting of HCC (BCLC-B and -C). *J Hepatol* 2021;74(5):1225–1233. doi:10.1016/j.jhep.2021.01.046, PMID:33582128.
 - [26] Ji F, Li T, Nguyen MH. Improved survival and high sustained virologic response with DAA therapy in patients with HCV-related HCC: A call for expanded use. *J Gastroenterol Hepatol* 2021;36(6):1721–1722. doi:10.1111/jgh.15420, PMID:33528034.
 - [27] Dang H, Yeo YH, Yasuda S, Huang CF, Iio E, Landis C, *et al*. Cure With Interferon-Free Direct-Acting Antiviral Is Associated With Increased Survival in Patients With Hepatitis C Virus-Related Hepatocellular Carcinoma From Both East and West. *Hepatology* 2020;71(6):1910–1922. doi:10.1002/hep.30988, PMID:31610027.
 - [28] Singal AG, Rich NE, Mehta N, Branch AD, Pillai A, Hoteit M, *et al*. Direct-Acting Antiviral Therapy for Hepatitis C Virus Infection Is Associated With Increased Survival in Patients With a History of Hepatocellular Carcinoma. *Gastroenterology* 2019;157(5):1253–1263.e2. doi:10.1053/j.gastro.2019.07.040, PMID:31374215.
 - [29] Karim MA, Singal AG, Kum HC, Lee YT, Park S, Rich NE, *et al*. Clinical Characteristics and Outcomes of Nonalcoholic Fatty Liver Disease-Associated Hepatocellular Carcinoma in the United States. *Clin Gastroenterol Hepatol* 2023;21(3):670–680.e18. doi:10.1016/j.cgh.2022.03.010, PMID:35307595.
 - [30] Kam LY, Yeo YH, Ji F, Henry L, Cheung R, Nguyen MH. Treatment rates and factors associated with direct-acting antiviral therapy for insured patients with hepatitis C-related hepatocellular carcinoma - A real-world nationwide study. *Aliment Pharmacol Ther* 2024;59(3):350–360. doi:10.1111/apt.17794, PMID:37937485.
 - [31] Bunchorntavakul C, Chavalitdhamrong D, Tanwandee T. Hepatitis C genotype 6: A concise review and response-guided therapy proposal. *World J Hepatol* 2013;5(9):496–504. doi:10.4254/wjh.v5.i9.496, PMID:24073301.
 - [32] Zhou DX, Tang JW, Chu IM, Cheung JL, Tang NL, Tam JS, *et al*. Hepatitis C virus genotype distribution among intravenous drug user and the general population in Hong Kong. *J Med Virol* 2006;78(5):574–581. doi:10.1002/jmv.20578, PMID:16555294.